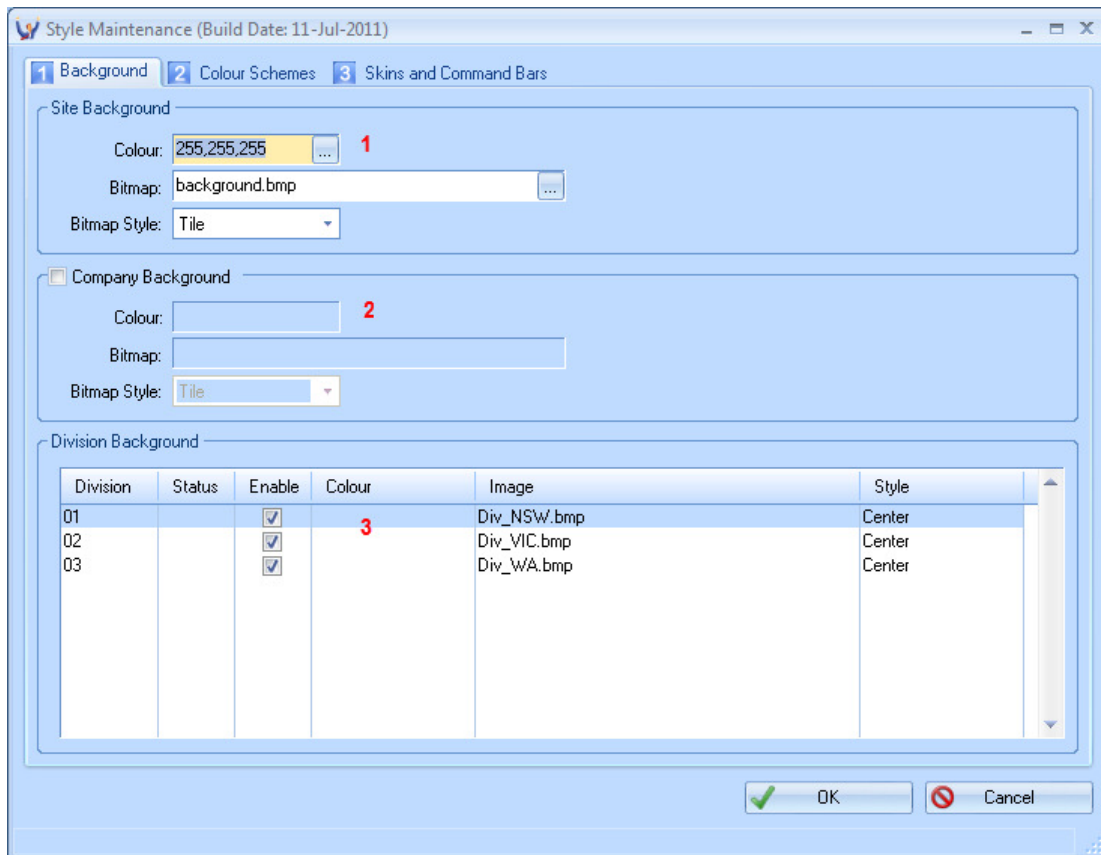


## Changing Screen backgrounds and Colours

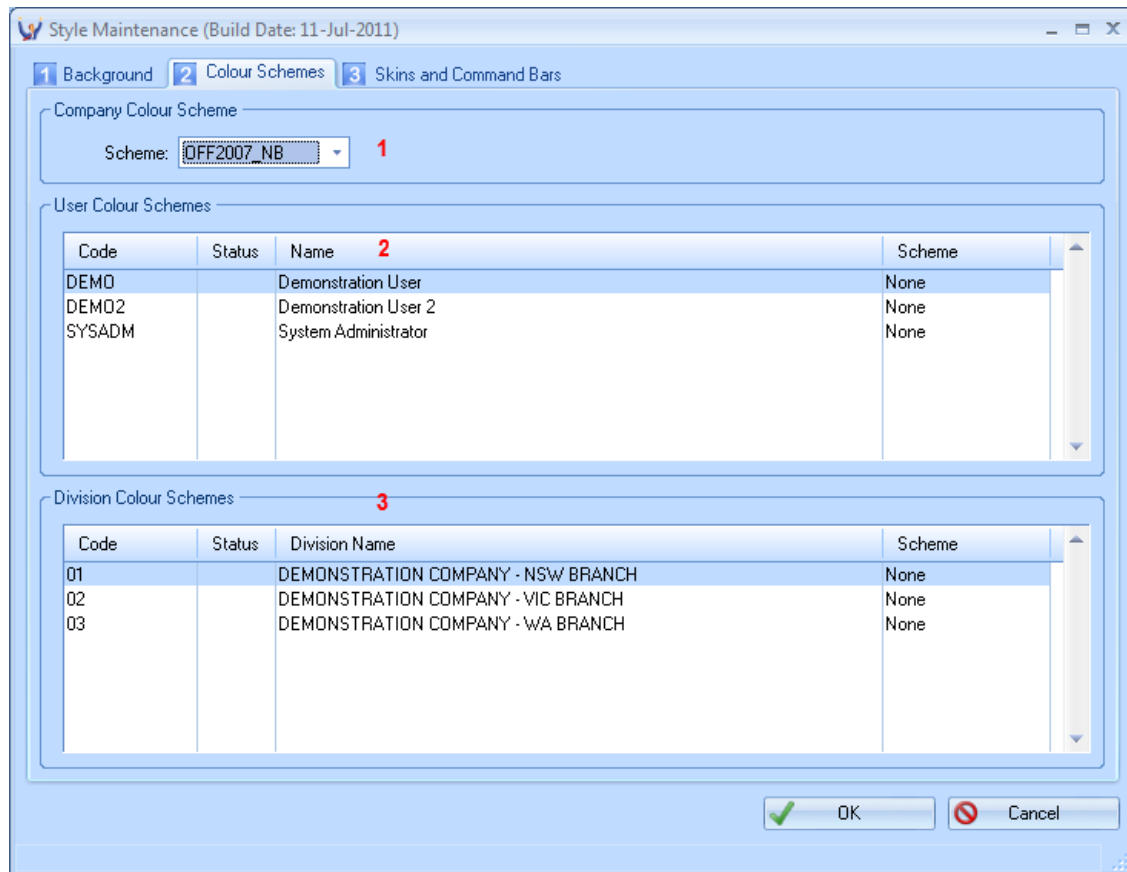
### Style Maintenance

**Style Maintenance<sup>S-U-S</sup>** allows you to setup different colours, backgrounds and styles for your copy of Triumph.



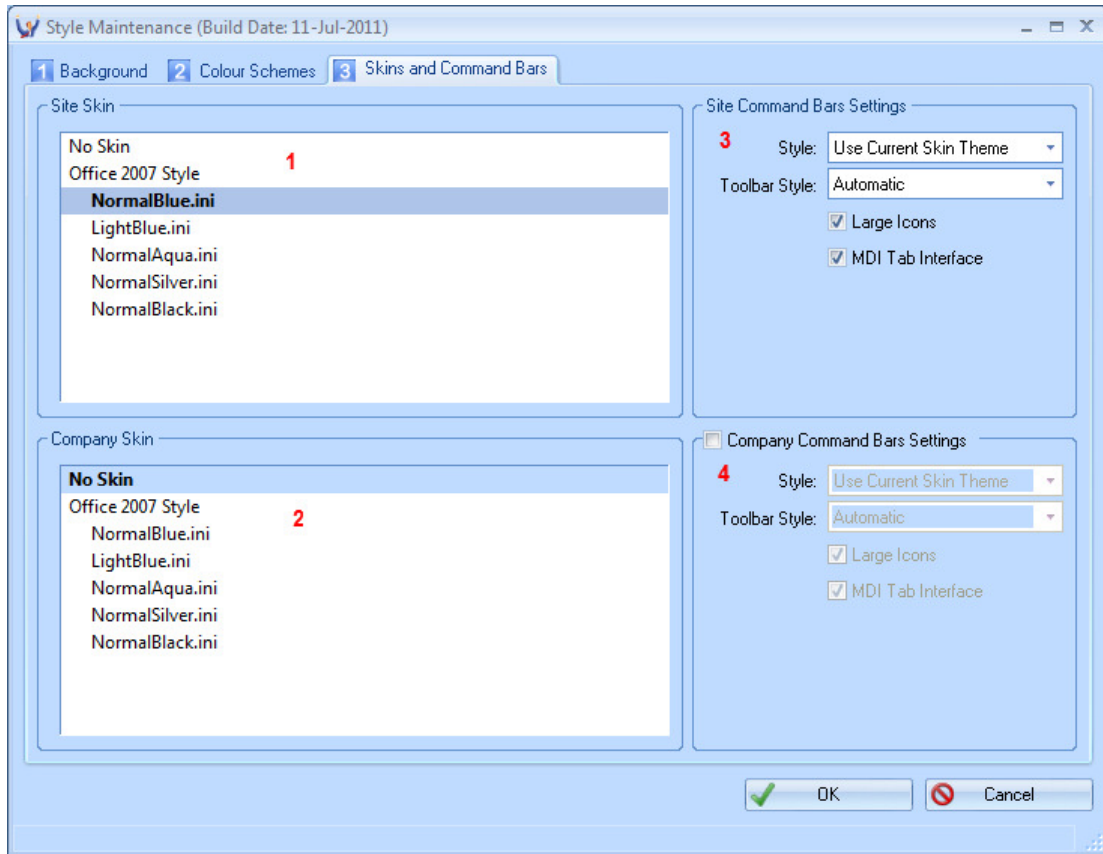
1. Set a default background colour or bitmap for all companies.
2. Set a default background colour or bitmap for the current company.
3. Set a background colour or bitmap for a specific division or location. This is only applicable in a Multi Division or Multi Location company.

You can also set a different style and colour scheme for all the screens.



1. Set a colour scheme/style for the current company.
2. Set a colour scheme/style for a specific user. This might be required for someone with colour blindness or poor vision.
4. Set a colour scheme/style for a specific division or location. This is only applicable in a Multi Division or Multi Location company.

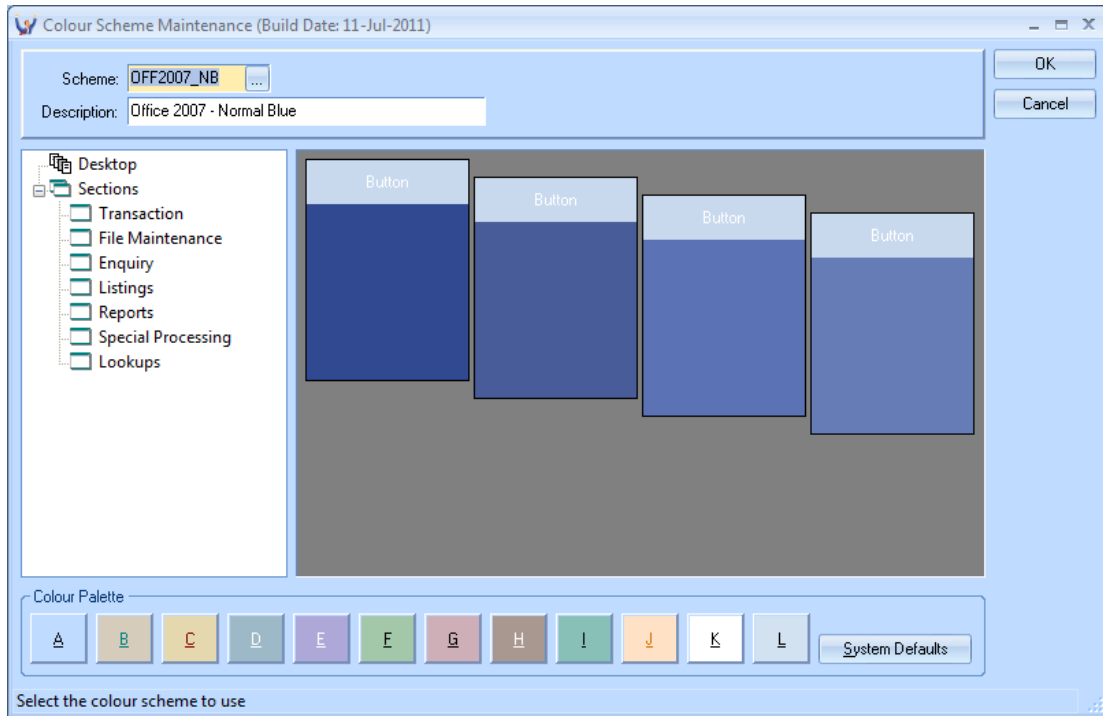
Lastly change the look and feel slightly by applying a skin or other specific options.



1. Set a default skin for all companies.
2. Set a skin for the current company.
3. Set the tool bar look and feel as the MDI tab interface for all companies.
4. Set the tool bar look and feel as the MDI tab interface for the current company.

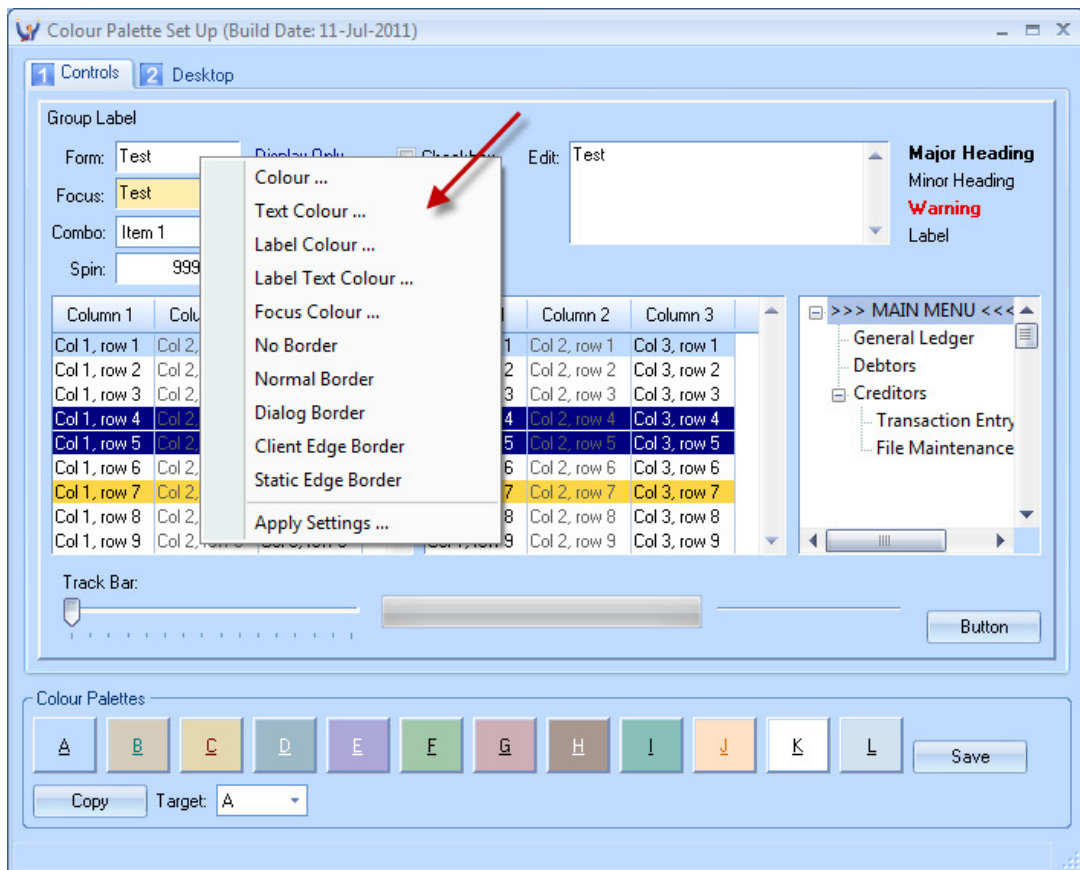
## Colour Scheme Maintenance

**Colour Scheme Maintenance**<sup>S-U-C</sup> allows you to set different colour pallets and styles to different components within Triumph to come up with a unique colour scheme.



## Colour Pallet Set Up

**Colour Pallet Set Up<sup>S-U-P</sup>** allows you to setup a basic style and colour pallets to then be used in colour schemes. It allows you to setup the look and feel of just about every visual component in Triumph.



## DISCLAIMER

### Software, Documents and Services available on this website

CA Management Services Pty Ltd and/or its respective suppliers make no representations about the suitability of the information contained in the documents and related graphics published on this server for any purpose. All such documents and related graphics are provided "as is" without warranty of any kind. CA Management Services Pty Ltd and/or its respective suppliers hereby disclaim all warranties and conditions with regard to this information, including all implied warranties and conditions of merchantability, fitness for a particular purpose, title and non-infringement. In no event shall CA Management Services Pty Ltd and/or its respective suppliers be liable for any special, indirect or consequential damages whatsoever resulting from loss of use, data or profits, whether in an action of contract, negligence or other tortious action, arising out of or in connection with the use or performance of information available from this server or failure to provide services, or information available from this server.

The documents and related graphics published on this server could include technical inaccuracies or typographical errors. Changes are periodically added to the information herein. CA Management Services Pty Ltd and/or its respective suppliers may make improvements and/or changes in the product(s) and/or the program(s) described herein at any time.

### Links to Third Party Sites

The links in this area will let you leave CA Management Services Pty Ltd's site. The linked sites are not under the control of CA Management Services Pty Ltd and CA Management Services Pty Ltd is not responsible for the contents of any linked site or any link contained in a linked site, or any changes or updates to such sites. CA Management Services Pty Ltd is not responsible for webcasting or any other form of transmission received from any linked site. CA Management Services Pty Ltd is providing these links to you only as a convenience, and the inclusion of any link does not imply endorsement by CA Management Services Pty Ltd of the site.

For further information please contact our office

CA Management Services

88 Burswood Road

BURSWOOD WA 6100

Telephone: 08 9470 9922

Fax: 08 9470 9955

Email: [support@caman.com.au](mailto:support@caman.com.au)

Web: [www.caman.com.au](http://www.caman.com.au)

## Comments/Sign Off

Colin

Jacqui

Jerry

John

Mark

Sam